

GROUND PLUG®

THE PATENTED AND DESIGN PROTECTED

GROUNDPLUG SK & GP FOUNDATION

THE PERFECT SOLUTION FOR FOUNDATIONS



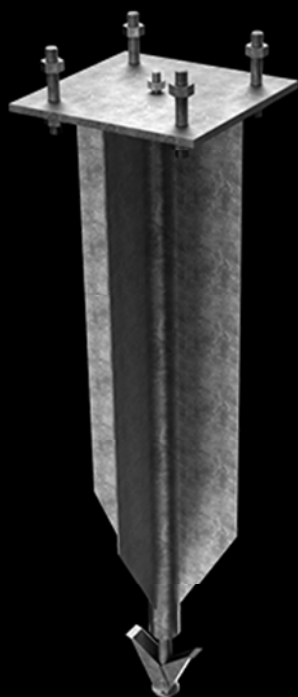
GROUNDPLUG SK & GP FOUNDATION

GROUNDPLUG SK & GP FOUNDATIONS ARE THE MOST UNIVERSAL GROUNDPLUG FOUNDATIONS.

Two main versions can be provided for the customer: GroundPlug SK foundation with anchoring shovel, and GroundPlug GP foundation without the shovel but with identical body construction as SK products. The shovel provides extra capacity against the tension load when the foundation is pulled from the surrounding soil.

Single GroundPlugs SK or GP foundations are mainly used for large signage, commercial signs, lighting installations, flagpoles and street furniture. GroundPlug International provides 9 standard types of GroundPlug SK or GP foundations with moment capacity from 9 kNm to 99 kNm.

Bespoke solutions of single GroundPlug GP foundations can be delivered with the moment capacity up to 190 kNm. All patented products* are protected against corrosion through a hot-dip galvanizing process.



STANDARD PRODUCTS

The standard products are of steel grade s235 or s355 and of the following types:

SK60TV1165 / GP60TV1000

SK60TV1365 / GP60TV1200

SK60TV1665 / GP60TV1500

SK60TV2165 / GP60TV2000

SK76TV2165 / GP76TV2000

SK76TV2665 / GP76TV2500

SK76TV3165 / GP76TV3000

SK89TV3165-5 / GP89TV3000-5

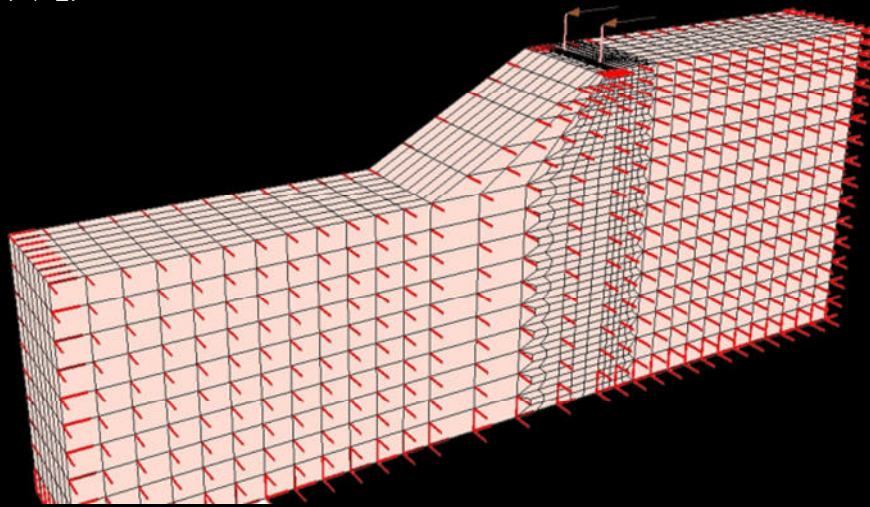
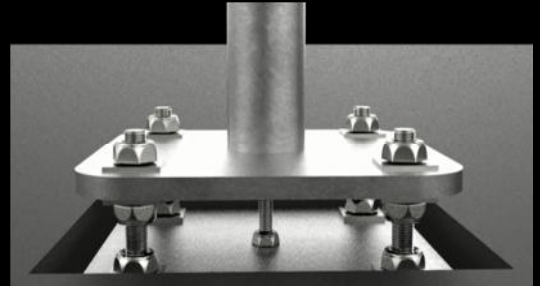
SK89TV3165-10 / GP89TV3000-10

*Specific Intellectual Property inquiries should be directed to the Headquarter in Denmark.

DOCUMENTATION

ALL STEEL FOUNDATIONS OFFERED BY GROUNDPLUG ARE BASED ON CALCULATION USING:

EN 1990, EN 1991-1-1, EN 1991-1-3, EN 1991-1-4, EN 1991-2, EN 1993-1-1, EN 1993-1-3, EN 1993-1-5, EN 1993-1-8, EN 1993-1-9, EN 1993-5, EN 1997-1, EN 1997-2, EN 1794-1.



CALCULATIONS

Analytical calculations & practical tests:

- ASTM Standard Designation (ASTM D1143, ASTM D3689, ASTM D3966) of compression, tension and lateral loading on single piles. Performed by Applied Foundation Testing (AFT), USA, and CLT THOMPSON INC, USA.
- NIRAS capacity and soil calculations, verified by LPILE by Ensoft Inc.

Our engineering team can provide design documentation for any structure based on European Design Standards (Eurocodes 0-9) with applied National Annexes. Calculations can also be performed based on valid American and Australian Design Standards.