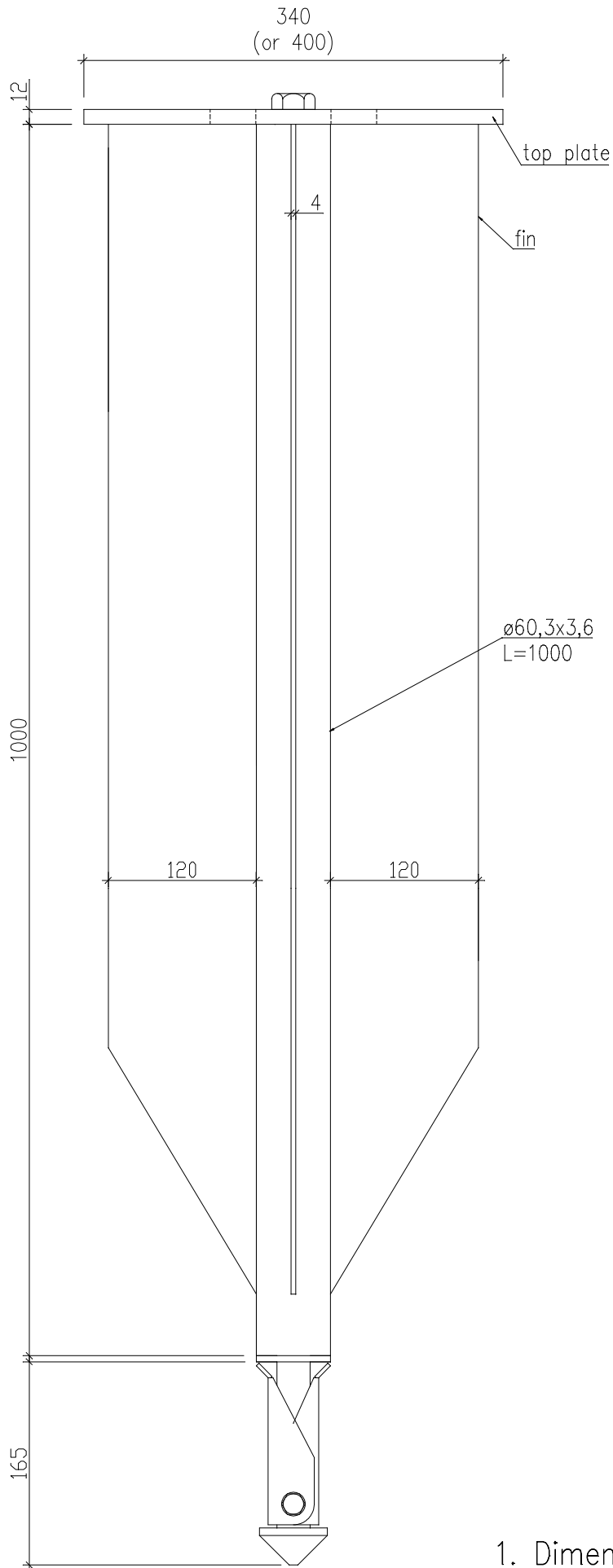
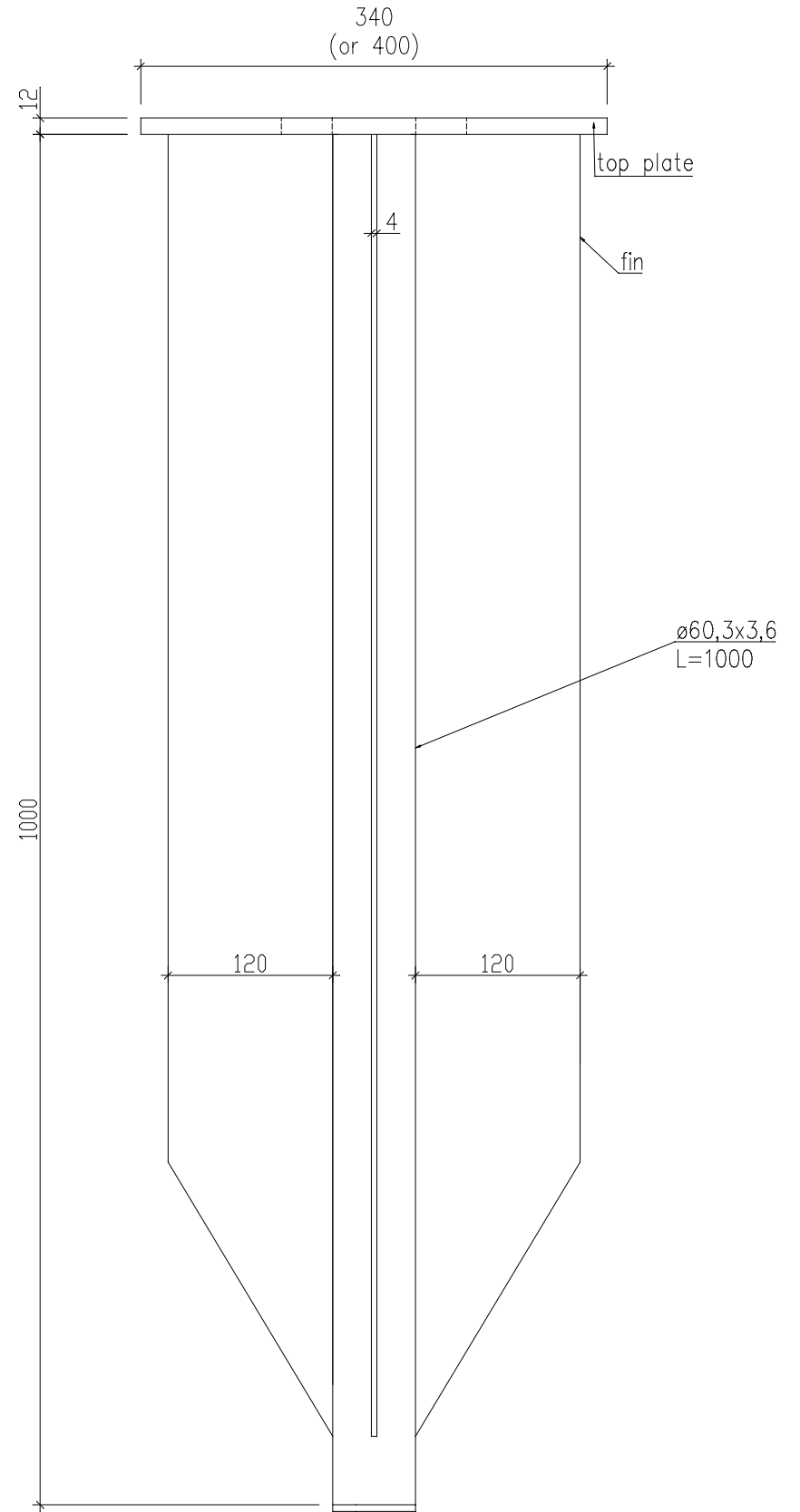


# SK 60 TV 1165



**A-A**  
Solution with shovel  
SCALE 1:5

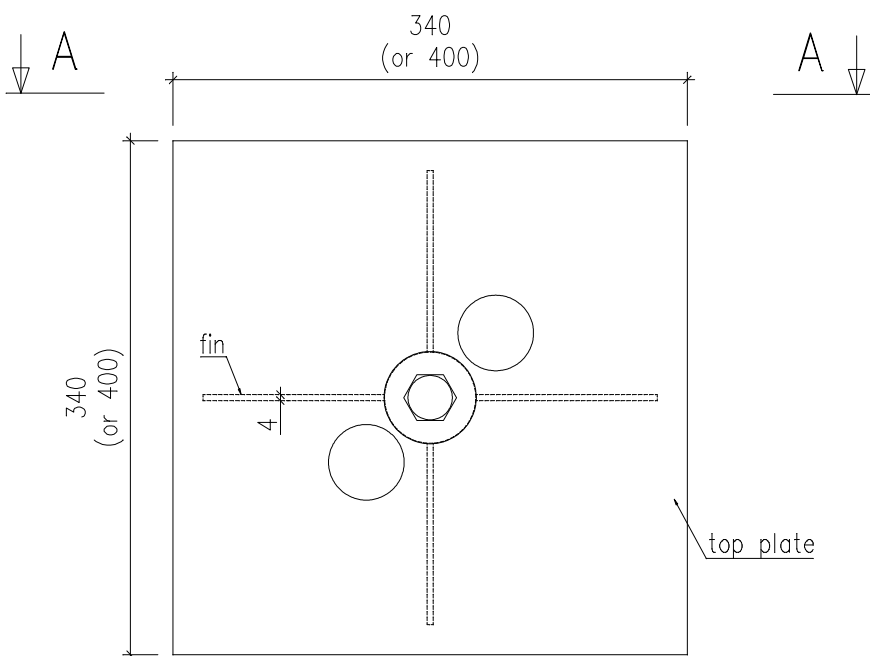
# GP 60 TV 1000



**A-A**  
Solution without shovel  
SCALE 1:5

## REMARKS:

1. Dimensions of holes for bolts based on contracting body need.
2. Distance between holes based on contracting body need.
3. Size of bolts/threaded rods based on contracting body need.
4. Recommended bolts/threaded rods are: M20 cl.8.8.
5. Cl.8.8 can be changed to A4-80 upon request.
6. Main grade of the steel is s355. It can be changed to s235 upon request.



# CONFIDENTIAL

## GROUND PLUG™

Finish Acc. to EN ISO 1461		Material/Steel grade S355		Sub-grade -		Tolerances acc. to: PN-EN ISO 9013:2008 PN-EN ISO 13920:2000	
Design	www.groundplug.com	Signature	Date	2015-03-18		Scale 1:5;1:2	
Draw	www.groundplug.com			2015-03-18			
Check	Name	Signature	Date	Format	Version	Change/Date	
Confirm				A3	v1	2015-03-18	
Product GP60TV1000/SK60TV1165			Top plate 340x340 400x400		File name sales drawing		Sheet
Object name GP60TV1000/SK60TV1165					Number of drawing GroundPlug		Projection