

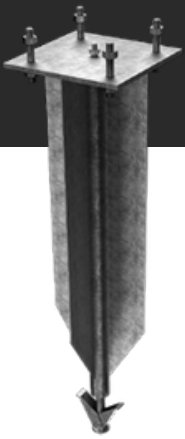
Instructions for Installing GroundPlug® SK Foundations

Preparation before installation

1. Obtain drawings and calculations from the customer for the product and the area where it is to be installed.
2. Obtain wiring information via LER, if not provided by the customer.
3. Ensure that the hole locations on the top plate correspond to the hole locations on the product's base plate.

The actual installation of the GroundPlug® SK foundations

1. Mark the spot on the ground where the GroundPlug® SK foundation is to be placed, then check the LER drawings for cable information.
2. Perform a cable scan to ensure that there are no misplaced cables.
3. First, drive a mandrel into the full length of the foundation to crush stones and similar objects.
4. Remove the mandrel.
5. Place the GroundPlug® SK foundation in the hole, then vibrate or drive it into the ground using a hydraulic tool. The hydraulic tool must be fitted with a control device to ensure that the driving process is controlled. (called a GroundPlug® bell)
6. After driving the SK foundation into the ground, the blades at the bottom of the foundation must be driven into the ground using a GroundPlug® jack that pulls on the threaded rod at the top of the SK foundation.
7. Install any additional GroundPlug® SK foundations in the same way (points 1-6)
8. GroundPlug® SK foundations are supplied with a base plate in which you can drill the desired holes for bolting using a magnetic drill.
9. The top plate is bolted using threaded rods, nuts and washers. The horizontal and vertical position of the product is adjusted using nuts and finished by tightening to the agreed torque.



List of Materials (provided by GroundPlug® or the contractor responsible for installation)

1. Cable scanner
2. Shovel and spade
3. Laser spirit level
4. Hydraulic hammer mounted on mobile unit (mini excavator or similar) and hammer bell according to GroundPlug® specifications.
5. Torque wrench (1 m) for fastening bolts and nuts.
6. [] Threaded rods [] mm each with [] washers and nuts M []. Supplied by GroundPlug®, if agreed.

Declaration

The method for installing and removing GroundPlug® SK foundations is carried out in compliance with applicable occupational health and safety requirements and environmental legislation.

Please also refer to GroundPlug's® 'General Terms of Sale'